

## Quiz for Lesson 8

Sept. 17, 2015

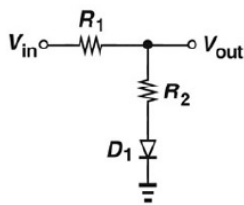
Electronic Circuits 1

Prof. Woo-Young Choi

Name: \_\_\_\_\_ Student ID: \_\_\_\_\_

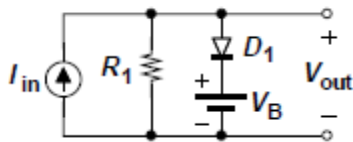
### Prob. 1

Plot  $V_{out}$  vs  $V_{in}$  in the following circuit using the constant voltage drop model with  $V_{D,on}$ .



### Prob. 2

Plot  $V_{out}$  vs  $I_{in}$  in the following circuit using the constant voltage drop model with  $V_{D,on}$ .



### Prob. 3

We want to use the constant voltage drop model with  $V_{D,on}$  for analyzing the following circuit. Determine the expression for  $V_{in}$  at which the diode characteristics change.

