

Introduction

❖ Topic

- CMOS integrated optical receiver (circuit part)

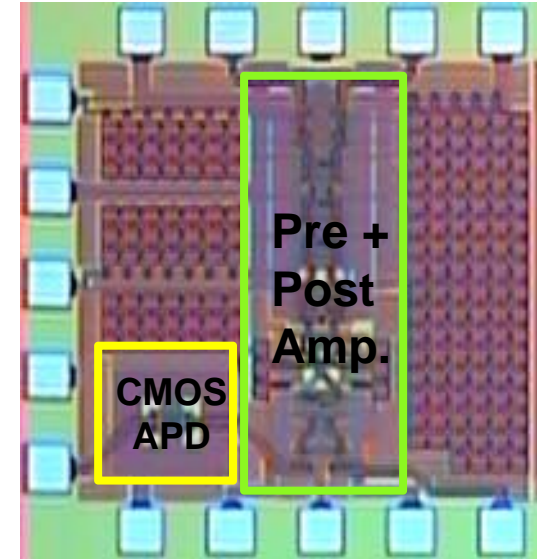
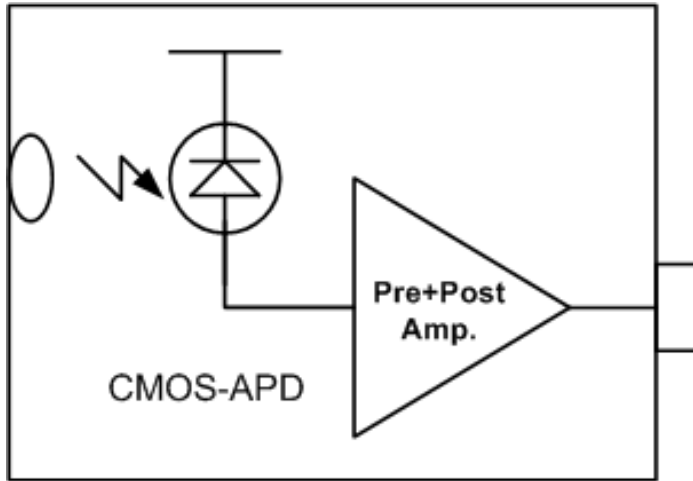
❖ Team member

- Team member: H.S Kang, M.J Lee, K.Y Park, and J.S Yoon
 - Physical PD modeling part : H.S Kang and M.J Lee
 - Electronic circuit part : K.Y Park and J.S Yoon

❖ Sponsor

- University-Research Cooperation Course with Korea Electronics Technology Institute (KETI)

Research explanation



- ❖ CMOS optical pre+post amplifier for integration with CMOS-APD
 - High sensitivity, low noise
 - High transimpedance gain and wide input dynamic range
 - Measurement is in progress!